

# Rolex China Sea Race

Entrant Briefing

# Introduction

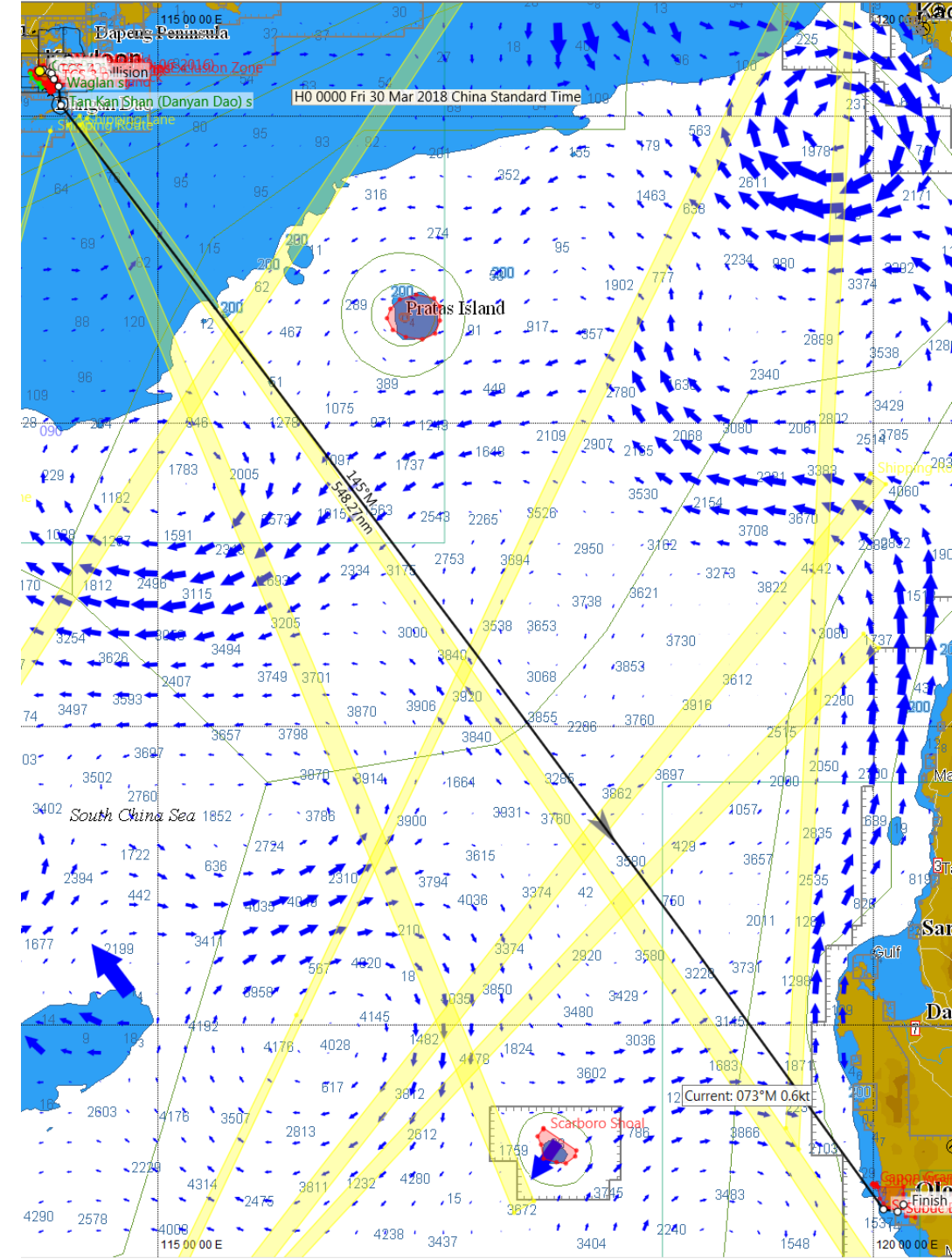
- Cameron Ferguson:  
Chairman of Yacht Racing Sub-Committee (YRSC)  
Chief Scrutineer
- Nicolas Cohen-Addad: YRCS Offshore Racing Representative
- Ailsa Angus: Sailing Manager

# Topics

- Overview
- Pre-race timeline
- Documentation timeline
- World Sailing - Offshore Special Regulations
- Equipment purchases
- Scrutineering
- Boat preparation
- Crew preparation
- CIQ
- Post-race

# Overview

- Hong Kong to Subic Bay, Philippines
- 565 Nautical Miles
- Category 1 Race under RORC



# Pre-race Timeline

- 24 Feb Entry deadline
- 24 Feb Yacht documents
- 3 Mar Late entry
- 3 Apr Welcome Party (1900-2100hrs)
- 5 Apr Race start @ 1120hrs
- 3-5 days Broad reach sailing

# Documentation Timeline

- 24<sup>th</sup> Feb: Stability, Constructions & Inspection Declaration
- 24<sup>th</sup> Feb: Race Safety Form
  - Yacht insurance
  - VHF (or above) operator & vessel radio license
  - EPIRB registration
  - Satellite phone credits
  - World Sailing - Offshore Personal Safety certificates
  - First Aid certificates
  - Scrutineering checklist
- 24<sup>th</sup> Feb: Crew Experience form
- 24<sup>th</sup> Feb: Media Disclaimer form
- 27<sup>th</sup> Mar: Next of kin details form
- 27<sup>th</sup> Mar: Passport, HKID, Visas, copy of Passport picture page (new Philippines requirement)
- 3<sup>rd</sup> Apr: Port clearance [MD510, MD518, M507, Op Licence, Insurance, Passport, HKID, PVOL)
- 4<sup>th</sup> Apr: Immigration clearance [ID207A, Crew Passports, Crew HKIDs]

# Offshore Special Regulations

- You must read:
  - World Sailing Offshore Special Regulations (in Race Safety Form)
  - RHKYC Prescriptions (in Race Safety Form)
  - RORC Prescriptions (in Race Safety Form)
  - Notice of Race
  - Sailing Instructions
- Will cover the following requirements
  - Expensive
  - Problematic
  - New

# Offshore Special Regulations

## **Stability, Constructions & Inspection Declaration form**

- Building Plan Review
  - Launched before 2010 ABS Certificate for Offshore Racing Yachts
  - If production yacht, Category A (ISO 12215) certification
  - After 2009 if custom yacht will require a WS Building Plan Review certificate
- Structural inspection every 24 months
  - List of surveyors on race website (not exhaustive)
- Structural inspection after any grounding



# Offshore Special Regulations

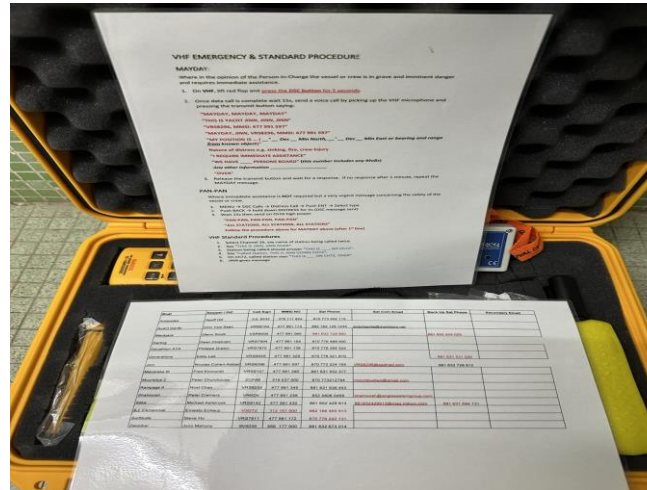
## Communications

- EPIRB
  - Properly registered with national authority
  - If HK yacht, don't purchase/program/register overseas!
- One satellite phone shall (RHKYC Prescription)
  - Waterproof cover
  - Internal battery
  - Not reliant on external device e.g. IridiumGo is not a satellite phone
  - Have 15 minutes of emergency calling as all times
- One satellite phone shall (RHKYC Prescription)
  - Be connected to an external antenna (not puck type)
  - Be permanently connected to power source switched on
  - This device can be the IridiumGo (proper Satphone in Grab Bag)



# Offshore Special Regulations

- Example Emergency Communication Kit



# Offshore Special Regulations

## Communications

- Satellite Tracker that can TX/RX
  - Given to all yachts in race
  - Primary means of routine communications
    - Weather
    - Position reporting
  - Must test smartphone App before departure
- VHF
  - All must be DSC capable (RHKYC Prescription)
  - Must have an emergency antenna
  - Must have an MMSI programmed into VHF (DSC enabled)
- AIS
  - Must remain on for duration of race
  - Will be checking transmission performance!
  - Practice using for collision avoidance
- Radar Reflector
  - Ensure meets OSRs specification (no tube types)



# Offshore Special Regulations

## Communications (removed)

- MF/HF has been removed from RHKYC Prescriptions
  - Was never a Cat 1 requirement (Cat 0 only)
  - Was appropriate when satellite communications was limited
  - Satellite coverage via Iridium now greatly enhanced
  - Primary means of Distress Alert is EPIRB
  - If abandoning TAKE THE TRACKER & SATPHONE!





# Offshore Special Regulations

## Crew

- All crew to carry an AIS PLB
- Crew overboard GPS position within 10 seconds
- Lifejacket
  - ISO 12402
  - Must have hood, crotch straps, light, gas inflation, harness, etc
  - PIC responsible for servicing every 12 month (record, take pictures)
- Safety tether
  - ISO 12401
  - Manufactured after 2000
  - Overload indicator
  - All must all have 1m
  - If have 2m then must also have 1m



# Offshore Special Regulations

## Liferafts

- Only serviced at manufacturer authorised service station
  - List on race website
  - We will check!
- Can be <24hr (RHKYC Prescription)  
But missing water, food, flares, TPAs, CAT1 first aid, etc must be:
  - Be in Grab Bag (one for each liferaft)
  - Be SOLAS/WheelMark approved
  - Man Co (mancohk@yahoo.com.hk)



# Offshore Special Regulations

## Sails

- Heavy weather jib
  - Can be attached to stay without using luff grove
- Storm jib
  - Highly-visible colour
  - Can be attached to stay without using luff grove
- Mainsail
  - Reef luff by 50% or Trysail





# Offshore Special Regulations

## Bilge Pumps

- Manual
  - One on deck
  - One below deck
- Electric
  - 200ltr/min
  - Can be achieved via multiple small pumps
- Soft Wooden Bungs





# Offshore Special Regulations

## First Aid Kit

- Standard first aid kit

## Offshore Medical Kit

- Reflect conditions, duration of race and number of crew
- Pain relief
- Broad spectrum antibiotics
- Speak to your doctor for suggested contents



# Equipment Purchases

## Need to purchase very soon

- Liferafts
- EPIRBs
- Crew AIS PLBs
- Satellite phone



## Group Discount

- Will try and coordinate group discounts  
e.g. Seago 8 man liferaft from UK GBP1,260  
+ shipping (needs shipping back to UK 3 year for servicing)



# Boat Preparation

- Rig inspection and maintenance (mast, shrouds, spreaders, halyards, sheets)
- Electrical system inspection
- Engine inspection
- Sail inspection and maintenance
- Through hull checks
- Cooking stove installation and testing
- Checking of expiry date of all batteries of all equipment
- Clear labelling of safety equipment
- Testing and loading of all required safety equipment (must be secure)
- VHF, DSC self test and DSC practice procedures
- Updated chart plotter charts
- Practice using AIS
- Satellite phone (voice and data) and tracker test (send/receive messages)

# Crew preparation

- 50% (min 2) hold a valid WS Offshore Personal Safety certificate (including PIC) †
- 30% (min 2) hold a valid first aid certificate †
- VHF DSC procedures i.e. routine and distress \*
- Emergency drills †
  - MOB
  - Fire (engine, electrical)
  - Abandon ship
  - Emergency steering \*
  - Loss of rudder \*
  - Storm sail setting \*
- Crew experience †
  - We will review crew experience to ensure sufficient
  - Night sailing with crew
  - Coastal Races Series (4 Feb, 11 Mar) – Participation will be counted towards offshore experience

† RHKYC Prescriptions

\* Must show evidence e.g. pictures, video

# Scrutineering Process

## Race Safety Form

- Record of yacht details and equipment
- Scrutineering checklist
  - PIC completes checklist
  - Experienced Independent Inspector (no “mates” passes)
  - Official scrutineer inspection
- Must be done in time!

## Future Races

- One check every 12 months so potentially non for Oct's Vietnam race
- Still need to complete Race Safety Form, PIC checklist (II or OS not required)
- Will perform random checks

# CIQ

- CIQ fee US\$200 + Exit Fee US\$50
- Customs
- Immigration
  - Require printed copies of passports
  - For Visas (China & Taiwan) send to Philippines before departure
  - Delivery crew info to Philippines pre-race
- Quarantine
  - Unvaccinated will require PCR 48hrs before departure
  - Results sent to Philippines before departure
  - Quarantine official will board in SBYC

# Post-race

- Accommodation (see race website and book soon!)
- Sunday 9<sup>th</sup> April: Prizegiving in Subic (please stay for the party)
- Return flights
- Return delivery crew (will add to race website)
- Wednesday 19<sup>th</sup> April: Prizegiving in RHKYC, KI